

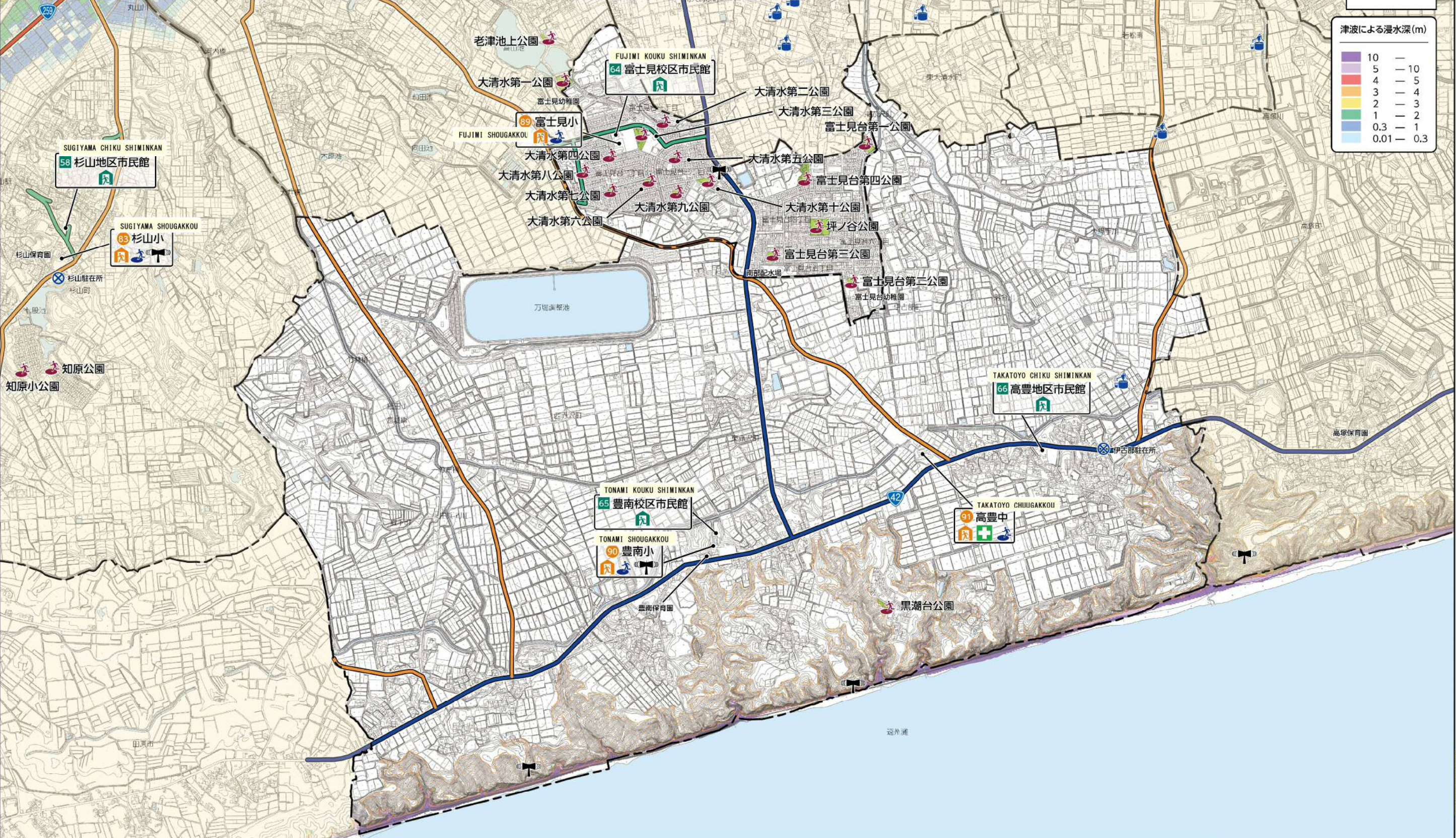


- Primary Designated Safe Shelter
- Secondary Designated Safe Shelter
- Emergency Facilities for Elderly and Disabled persons, etc
- Emergency Medical Aid Station
- Temporary Evacuation Area
- Base Evacuation Area
- Evacuation Area
- Tsunami Evacuation Building
- Fire Station
- Tsunami Evacuation Area
- Support Facilities for Stranded persons
- Portable Water Tank
- Emergency Well
- Disaster Prevention Base Park
- Emergency Supplies Warehouse
- Flood-control supplies Warehouse
- Public Warning Siren
- Police Station
- Primary Emergency Transportation Route
- Secondary Emergency Transportation Route
- Emergency Transportation Route Designated by City
- Emergency Transportation Route Designated by City
- Prefectural road
- Elementary School District

26	27
30	31

津波による浸水深 (m)

10	—
5	— 10
4	— 5
3	— 4
2	— 3
1	— 2
0.3	— 1
0.01	— 0.3



- Sistema de Transmissão Simultânea Sem fio de Prevenção de Desastres
- Rota Principal de Transporte em Casos de Emergência
- Rota Secundária de Transporte em Casos de Emergência
- Rota de Transporte em Casos de Emergência Designada pelo Município
- Rota de Transporte em Casos de Emergência
- Rodovia Provincial Geral
- Distrito escolar de escolas primárias
- Quartel do Corpo de Bombeiros
- Quartel Policial, Posto Policial



※小学校区境界は、参考境界です。この境界は、校区を定めるものではありません。

30 富士見・豊南